



Cdc5L Polyclonal Antibody

| | |
|---------------------------|---|
| Catalog No | YP-Ab-16689 |
| Isotype | IgG |
| Reactivity | Human;Mouse;Rat |
| Applications | IHC;IF;ELISA |
| Gene Name | CDC5L |
| Protein Name | Cell division cycle 5-like protein |
| Immunogen | The antiserum was produced against synthesized peptide derived from human CDC5L. AA range:721-770 |
| Specificity | Cdc5L Polyclonal Antibody detects endogenous levels of Cdc5L protein. |
| Formulation | Liquid in PBS containing 50% glycerol, 0.5% BSA and 0.02% sodium azide. |
| Source | Polyclonal, Rabbit,IgG |
| Purification | The antibody was affinity-purified from rabbit antiserum by affinity-chromatography using epitope-specific immunogen. |
| Dilution | IHC: 1/100 - 1/300. ELISA: 1/5000.. IF 1:50-200 |
| Concentration | 1 mg/ml |
| Purity | ≥90% |
| Storage Stability | -20°C/1 year |
| Synonyms | CDC5L; KIAA0432; PCDC5RP; Cell division cycle 5-like protein; Cdc5-like protein; Pombe cdc5-related protein |
| Observed Band | |
| Cell Pathway | Nucleus . Nucleus speckle . Cytoplasm . May shuttle between cytoplasm and nucleus. . |
| Tissue Specificity | Ubiquitously expressed in both fetal and adult tissues. |
| Function | disease:A chromosomal aberration involving CDC5L is found in multicystic renal dysplasia. Translocation t(6;19)(p21;q13.1) with USF2.,function:DNA-binding protein involved in cell cycle control. May act as a transcription activator. Also seems to be involved in the second catalytic step of pre-mRNA splicing.,PTM:Phosphorylated; which enhances interaction with PPP1R8.,similarity:Belongs to the CEF1 family.,similarity:Contains 2 HTH myb-type DNA-binding domains.,subcellular location:May shuttle between cytoplasm and nucleus.,subunit:Homodimer. Interacts with DAPK3 (By similarity). Binds to DNA. Binds to adeno-pre-mRNA in an ATP-stimulated manner. Belongs to the spliceosome complex. Part of a spliceosomal 'core' complex consisting of CDC5L, PLRG1, SPF27, CCAP1, CCAP3 and CCAP6. Interacts with PLRG1, Lodestar/TTF2, and NIPP1/PPP1R8. Identified in the spliceosome C complex, at least composed |



Background

The protein encoded by this gene shares a significant similarity with *Schizosaccharomyces pombe* cdc5 gene product, which is a cell cycle regulator important for G2/M transition. This protein has been demonstrated to act as a positive regulator of cell cycle G2/M progression. It was also found to be an essential component of a non-snRNA spliceosome, which contains at least five additional protein factors and is required for the second catalytic step of pre-mRNA splicing. [provided by RefSeq, Jul 2008],

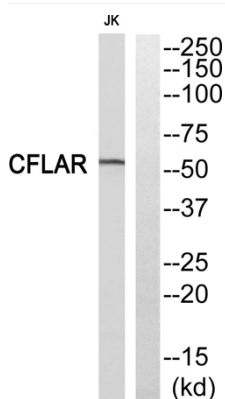
matters needing attention

Avoid repeated freezing and thawing!

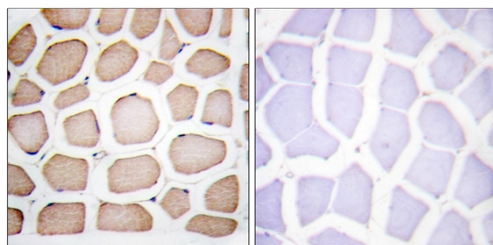
Usage suggestions

This product can be used in immunological reaction related experiments. For more information, please consult technical personnel.

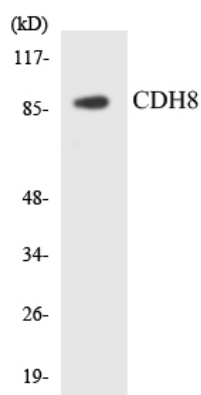
Products Images



Western blot analysis of CDC5L Antibody. The lane on the right is blocked with the CDC5L peptide.



Immunohistochemistry analysis of paraffin-embedded human smooth muscle, using CDC5L Antibody. The lane on the right is blocked with the CDC5L peptide.



Western blot analysis of the lysates from HeLa cells using CDH8 antibody.